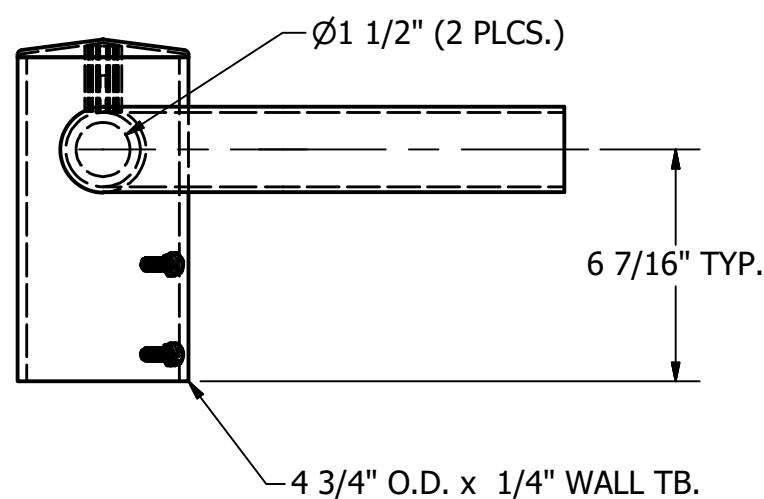


2.3/8" O.D. x .154 WALL TB.

18" TYP.

36"

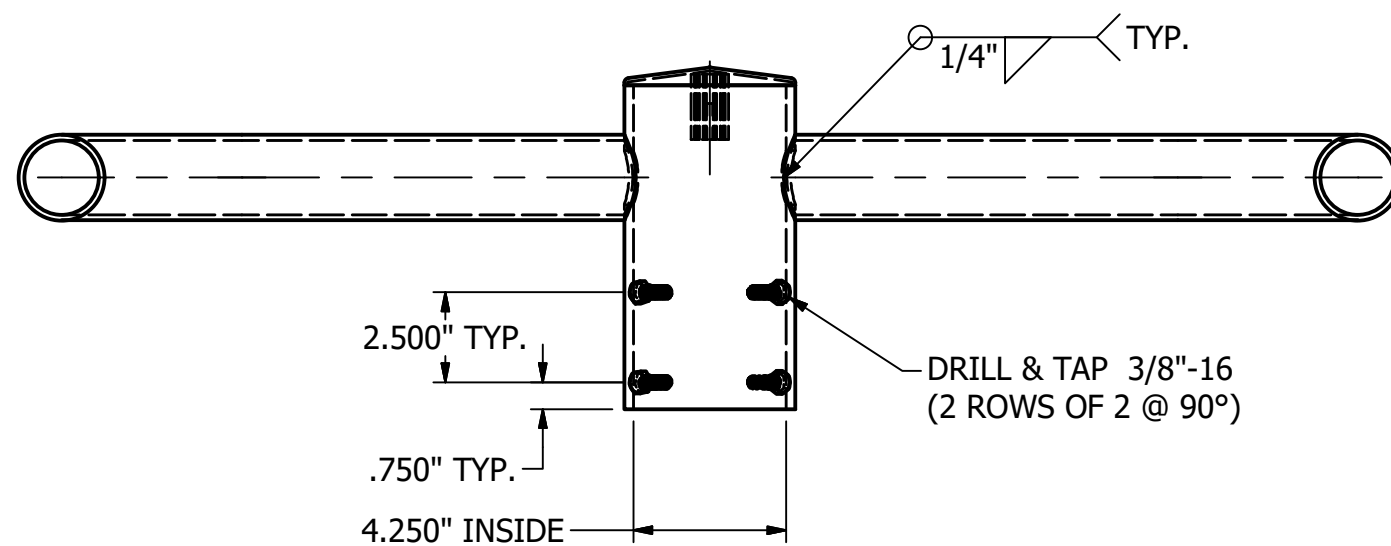
R5" TYP.



Ø1 1/2" (2 PLCS.)

6 7/16" TYP.

4 3/4" O.D. x 1/4" WALL TB.



1/4" TYP.

2.500" TYP.

DRILL & TAP 3/8"-16
(2 ROWS OF 2 @ 90°)

.750" TYP.

4.250" INSIDE

NOTE: FOR GALVANIZED BRACKETS ONLY DRILL & TAP 3/8"-16 .010 OVERSIZED TAP.

TOTAL WT. = 25.099 lbmass

			THIS DOCUMENT CONTAINS PROPRIETARY INFORMATION. DUPLICATION OR DISCLOSURE IS PROHIBITED WITHOUT THE EXPRESSED WRITTEN CONSENT OF FABRICATED METALS LLC	TOLERANCES: UNLESS OTHERWISE SPECIFIED FRACTIONAL ±1/8" 2 PLACE DEC. ±.03 3 PLACE DEC. ±.005 ANGULAR ±1°	DRAWN BY: P. DAUGHERTY	UTILITY METALS (A DIVISION OF FABRICATED METALS LLC.) DESCRIPTION: 2 LIGHT 36" HORIZONTAL BULLHORN BRACKET TO SLIP 4" TENON	PART NO.	
					APPROVED: PD		HS2-S36-4	
					ECN:		DWG NO.	
					SCALE: 3/16" = 1"		G-9346-0	
REV	DATE	BY	DESCRIPTION		DATE: 8/31/2020		REV	0