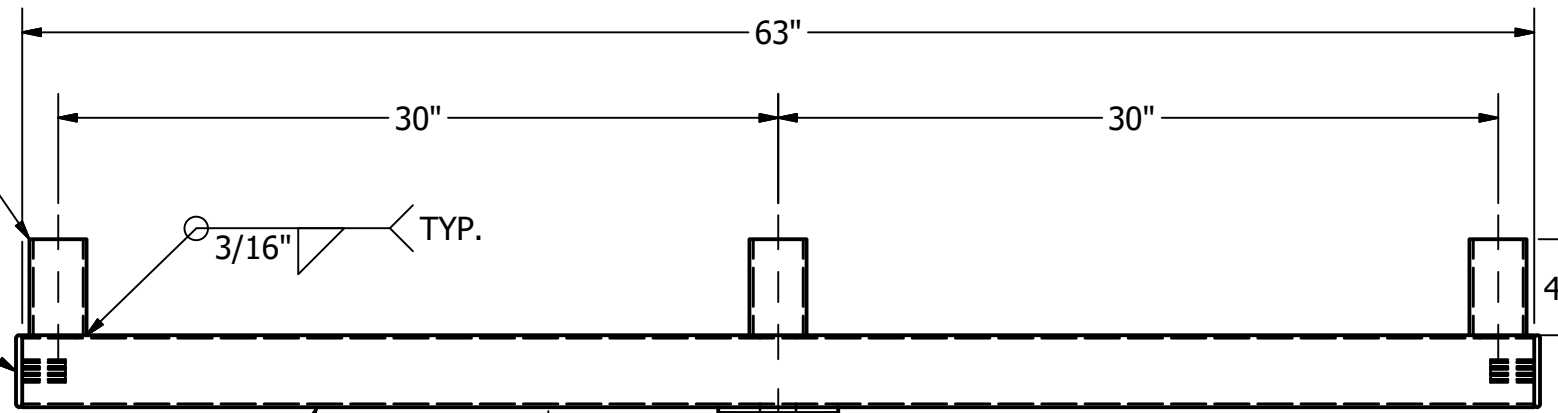


Ø1 1/2" DIA. (4 PLCS.)



2 3/8" O.D. x .154 WALL TB.



PRESS FIT CAP

3/16" TYP.

4" TYP.

4" SCH. 80 PIPE

3/16"

3" x 3" x 1/8" SQ. TB.

1.750" TYP.

.750" TYP.

3.826" INSIDE

DRILL & TAP 3/8"-16
(2 ROWS OF 2 @ 90°)

FOR GALVANIZED BRACKETS ONLY DRILL
& TAP 3/8"-16 .010 OVERSIZED TAP.

TOTAL WT. = 35.314 lbmass

			THIS DOCUMENT CONTAINS PROPRIETARY INFORMATION. DUPLICATION OR DISCLOSURE IS PROHIBITED WITHOUT THE EXPRESSED WRITTEN CONSENT OF FABRICATED METALS LLC	TOLERANCES: UNLESS OTHERWISE SPECIFIED FRACTIONAL ±1/8" 2 PLACE DEC. ±.03 3 PLACE DEC. ±.005 ANGULAR ±1°	DRAWN BY: P. DAUGHERTY	UTILITY METALS (A DIVISION OF FABRICATED METALS LLC.) DESCRIPTION: 3 LIGHT ROUND SQUARE ROUND BRACKET TO SLIPFIT 3 1/2"	PART NO. RSR-B3-3.5	
					APPROVED: PD		DWG NO. G-9313-0	
					ECN:		REV 0	
REV	DATE	BY			SCALE: 1/8" = 1"		0	
DESCRIPTION			DATE: 8/11/2020					