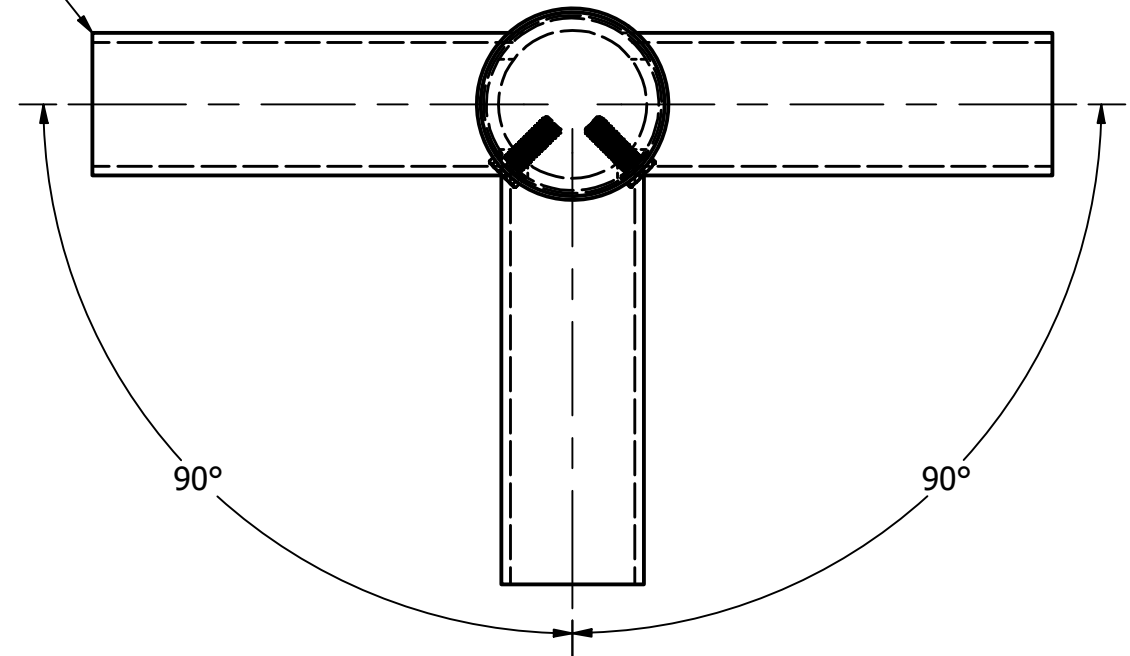
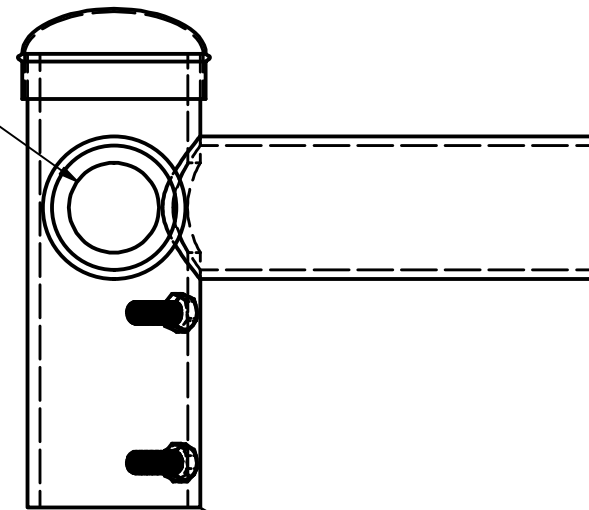


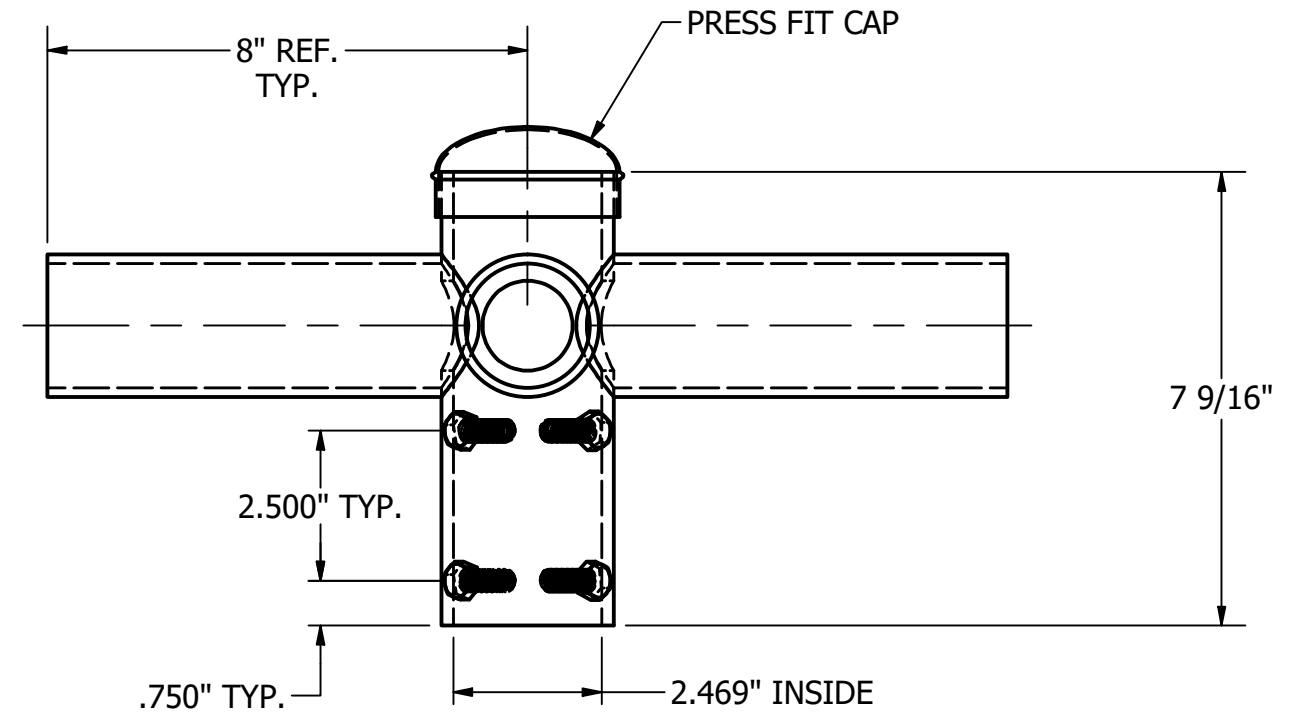
2 3/8" O.D. x .154 WALL TB.



1 1/2" DIA. (3 @ 90°)



2 7/8" O.D. x .203 WALL TB.



NOTE: FOR GALVANIZED BRACKETS ONLY DRILL & TAP 3/8"-16 .010 OVERSIZED TAP.

TOTAL WT. = 9.792 lbmass

			THIS DOCUMENT CONTAINS PROPRIETARY INFORMATION. DUPLICATION OR DISCLOSURE IS PROHIBITED WITHOUT THE EXPRESSED WRITTEN CONSENT OF FABRICATED METALS LLC	TOLERANCES: UNLESS OTHERWISE SPECIFIED FRACTIONAL ±1/8" 2 PLACE DEC. ±.03 3 PLACE DEC. ±.005 ANGULAR ±1°	DRAWN BY: P. DAUGHERTY	<b>UTILITY METALS</b> (A DIVISION OF FABRICATED METALS LLC.) DESCRIPTION: 2" x 8" 3 @ 90° SPOKE BRACKET FOR 2 3/8" TENON	PART NO. SB-390-08-2
					APPROVED: PD		DWG NO. G-8344-0
					ECN:		REV 0
REV	DATE	BY			DESCRIPTION		SCALE: 5/16" = 1"