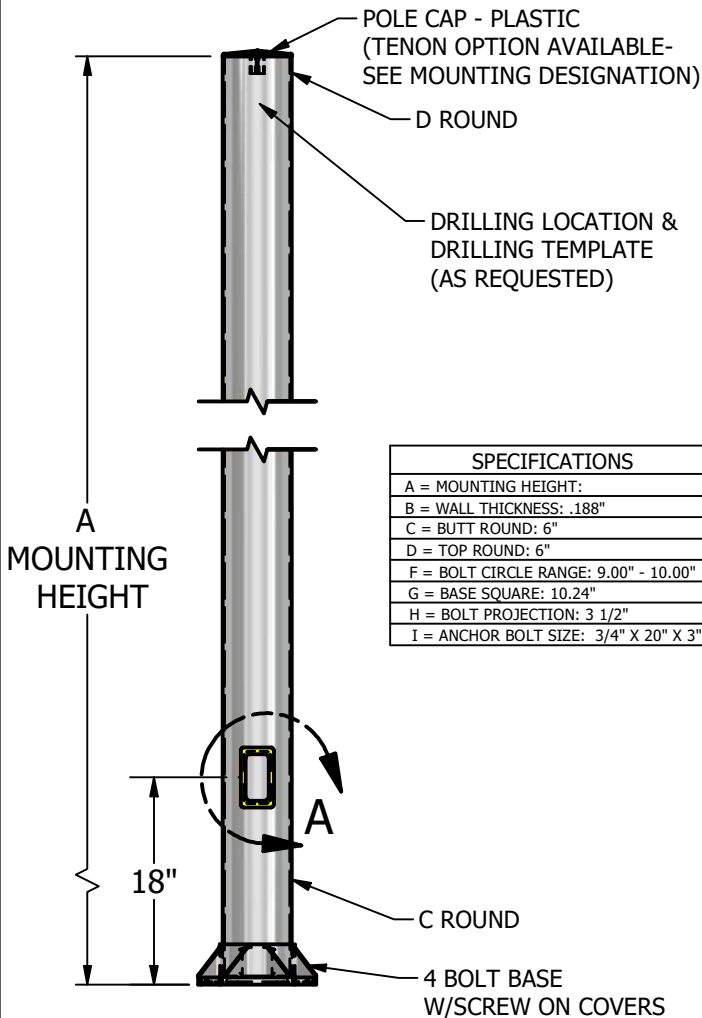


UTILITY METALS

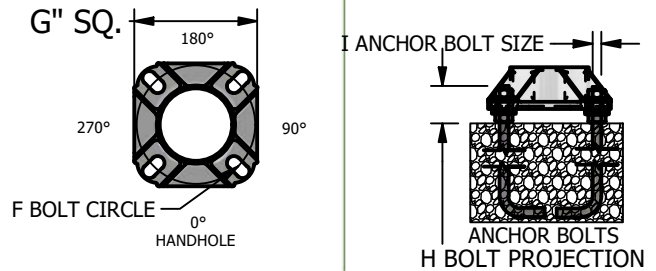
A DIVISION OF FABRICATED METALS LLC.

JOB NAME			PART NO.		
DESCRIPTION:			DRAWING NO.		REV
DRAWN BY:	APPROVED:	ECN:	SCALE:	DATE:	

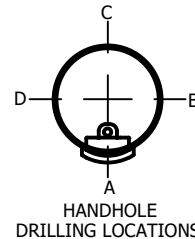


SPECIFICATIONS	
A = MOUNTING HEIGHT:	
B = WALL THICKNESS: .188"	
C = BUTT ROUND: 6"	
D = TOP ROUND: 6"	
F = BOLT CIRCLE RANGE: 9.00" - 10.00"	
G = BASE SQUARE: 10.24"	
H = BOLT PROJECTION: 3 1/2"	
I = ANCHOR BOLT SIZE: 3/4" X 20" X 3"	

ANCHORAGE



FIXTURE

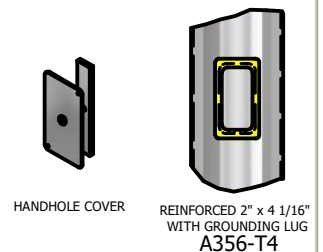


BASE



4 BOLT ANCHOR BASE
WITH BOLT COVERS

HANDHOLE



2013 AASHTO MAXIMUM EPA RATINGS WITH 3 SEC. WIND GUST

ALUMINUM ROUND STRAIGHT POLE RSA 6 188 SERIES

PART NUMBER	MAX WT LBS	90 MPH SQ FT	100 MPH SQ FT	110 MPH SQ FT	120 MPH SQ FT	130 MPH SQ FT	140 MPH SQ FT	150 MPH SQ FT
RSA 6 188 8	350	53.20	42.60	35.80	30.10	25.50	22.00	19.00
RSA 6 188 10	260	42.10	33.70	27.90	23.40	20.00	16.90	14.80
RSA 6 188 12	260	34.00	27.60	22.80	18.90	16.00	13.70	11.80
RSA 6 188 14	200	28.80	22.50	19.00	15.80	13.30	11.40	9.80
RSA 6 188 16	200	24.10	19.30	15.80	13.00	11.00	9.40	8.10
RSA 6 188 18	150	20.00	15.80	12.90	10.70	9.10	7.70	6.60
RSA 6 188 20	150	16.80	13.30	10.80	8.90	7.50	6.30	5.30
RSA 6 188 24	150	12.00	9.50	7.60	6.10	5.00	4.20	3.50
RSA 6 188 25	150	11.10	8.70	6.90	5.50	4.50	3.80	3.20